

User guide for Installation of Windows 7 driver package for ZTE WCDMA DATA CARD

1 How to get Windows 7 driver package

ZTE WCDMADATA CARD support Windows 7 operating system, please download the Windows 7 driver package from Operator's website: AS_PCDrvSetupV1.0.0B01 , after decompressed this package, it will generate the exe. Installation file: ZTEDrvSetup.exe.

2 Windows 7 driver package installation steps

Note: please firstly install UI program of Modem, then install Windows 7 driver package.

The specific installation steps are as follows:

(Note: this installation take ZTE common version's UI installation process as an example, the installation interface maybe is different from the customized UI installation interface, but the installation method is the same.) :

2.1 Insert Modem to PC with windows 7 operating system, the data card will automatically start the UI installation process as Fig 1.

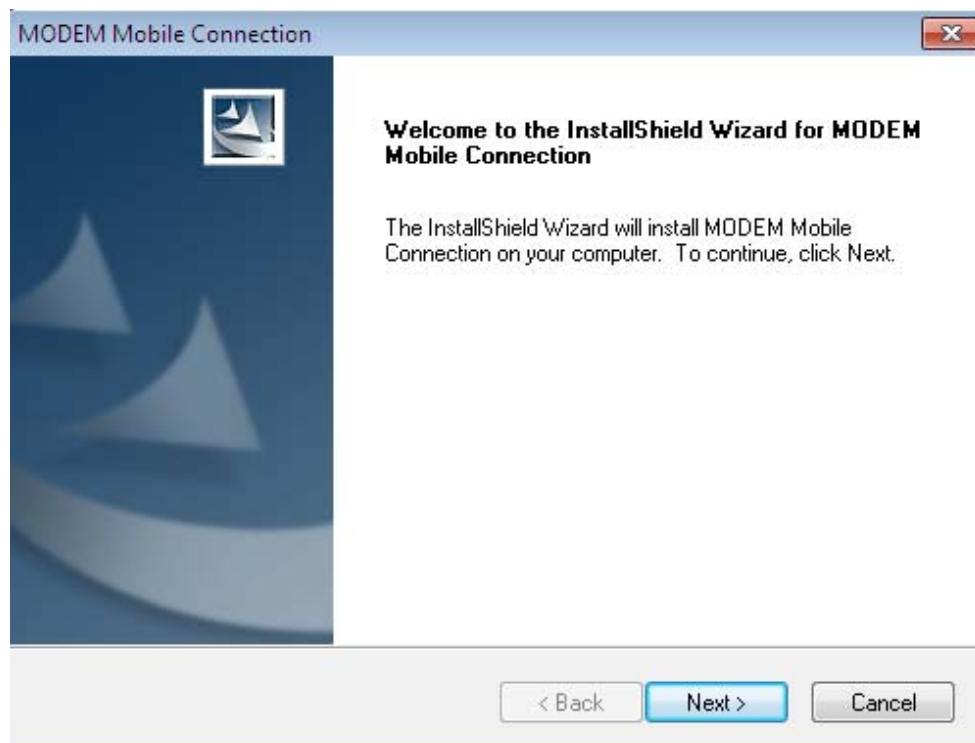


Fig 1

2.2 Following the prompt to finish the installation, the interface for installation completed is as fig 2.

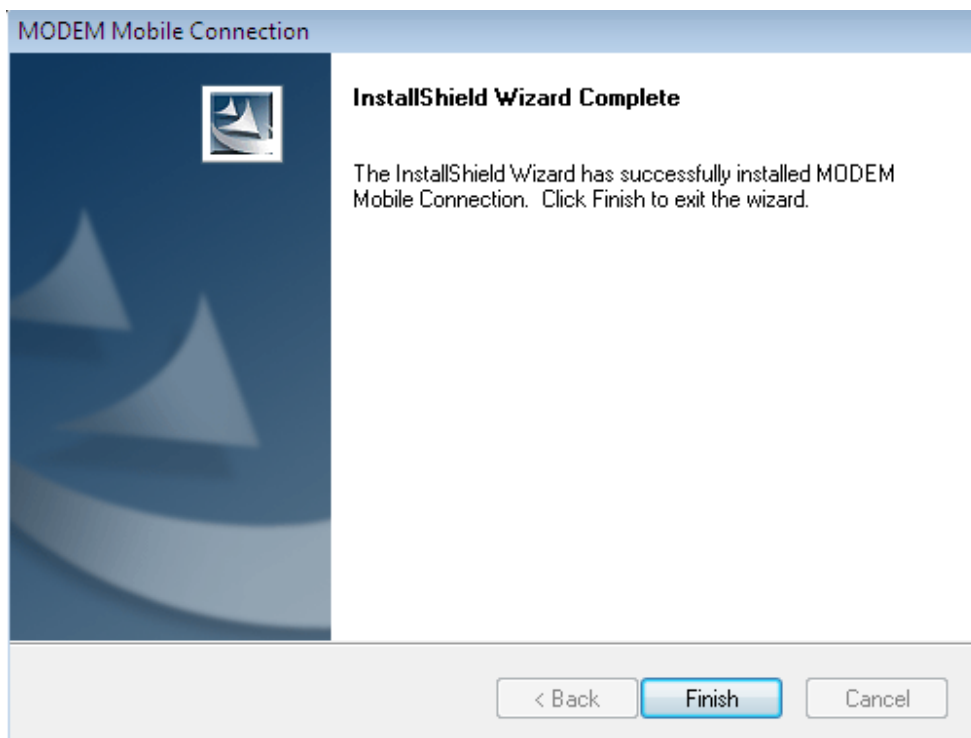


Fig 2

2.3 Double-click windows 7 driver package : ZTEDrvSetup.exe, the installation interface is as Fig3.

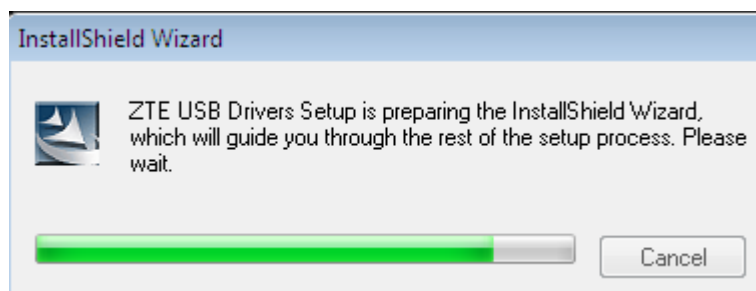


Fig 3

2.4 The interface for Windows 7 driver package installation completed is as Fig 4, click "Finish" to complete installation.

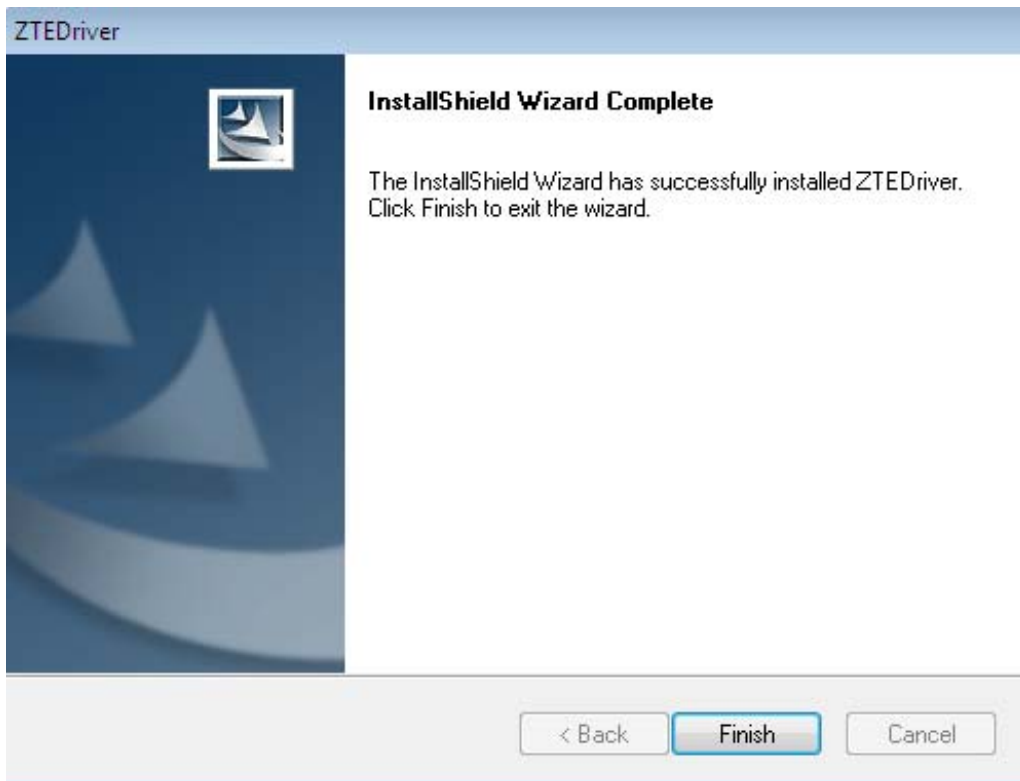


Fig 4

2.5 From “Start”» “Computer” right click “Mange” to find “Computer Management”, click “Device Manager”, search Modem and Ports (see red mark) , as Fig 5. it means Windows 7 driver package installed successfully, now you can normal use the Modem.

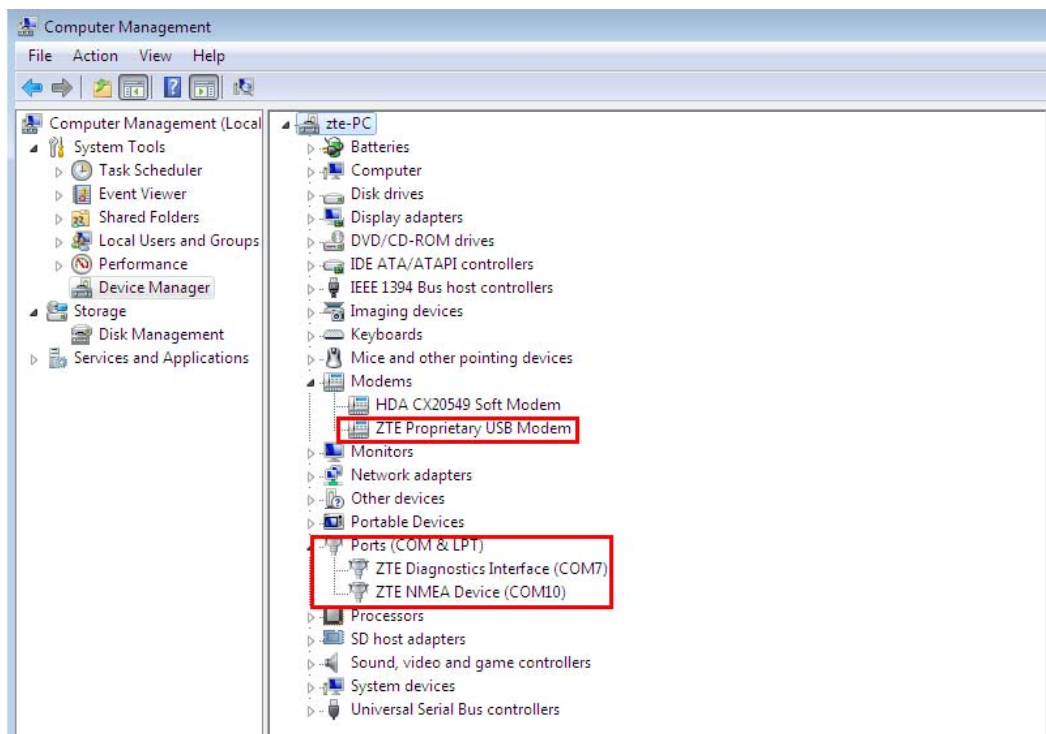


Fig 5

3. FAQ

3.1 If Windows 7 driver package is firstly installed, the UI program can't be installed , how to solve the problem like this?

Please firstly uninstall Windows 7 driver, then install UI program firstly , and then install Windows 7 driver, as the specific installation methods, please refer to the “Windows 7 driver package installation steps”.

Windows 7 driver uninstall methods are as follows:

1) From “Start”》“Control Panel”, click “Uninstall a program” . As Fig 6.

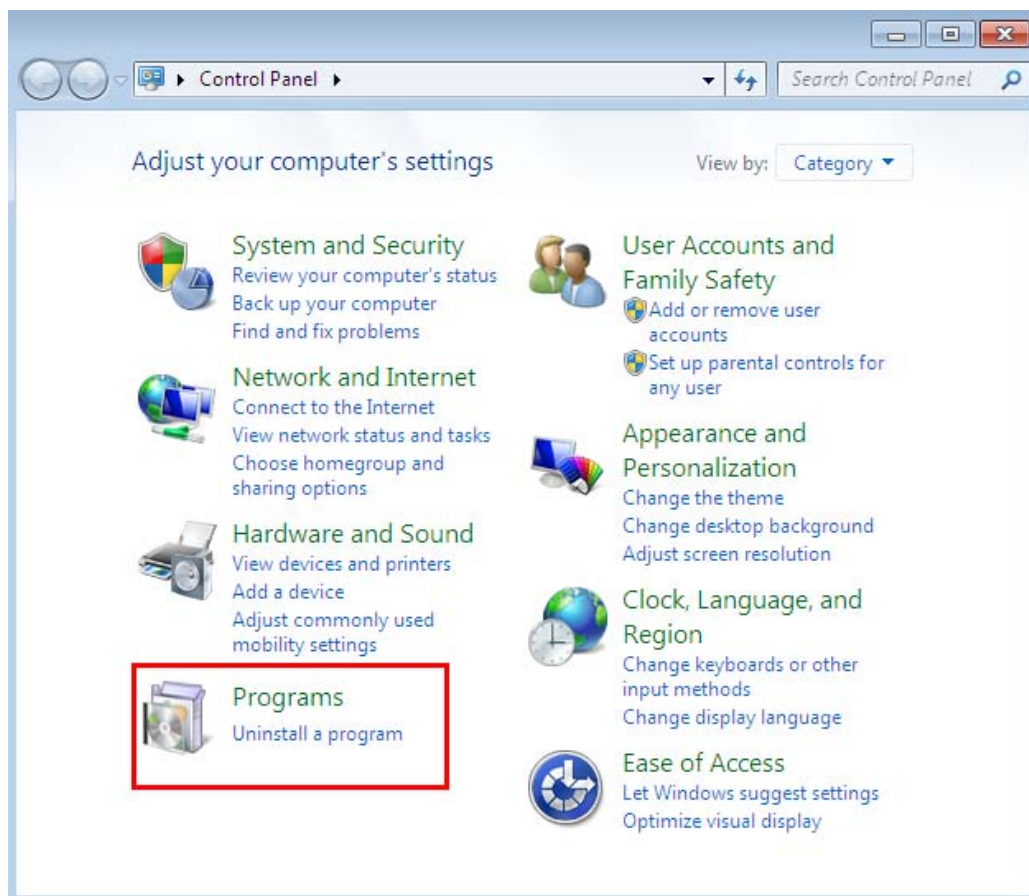


Fig 6

2) selected “ZTE USB Driver”, click “Uninstall /Change”, to uninstall Windows 7's driver.

As fig 7.

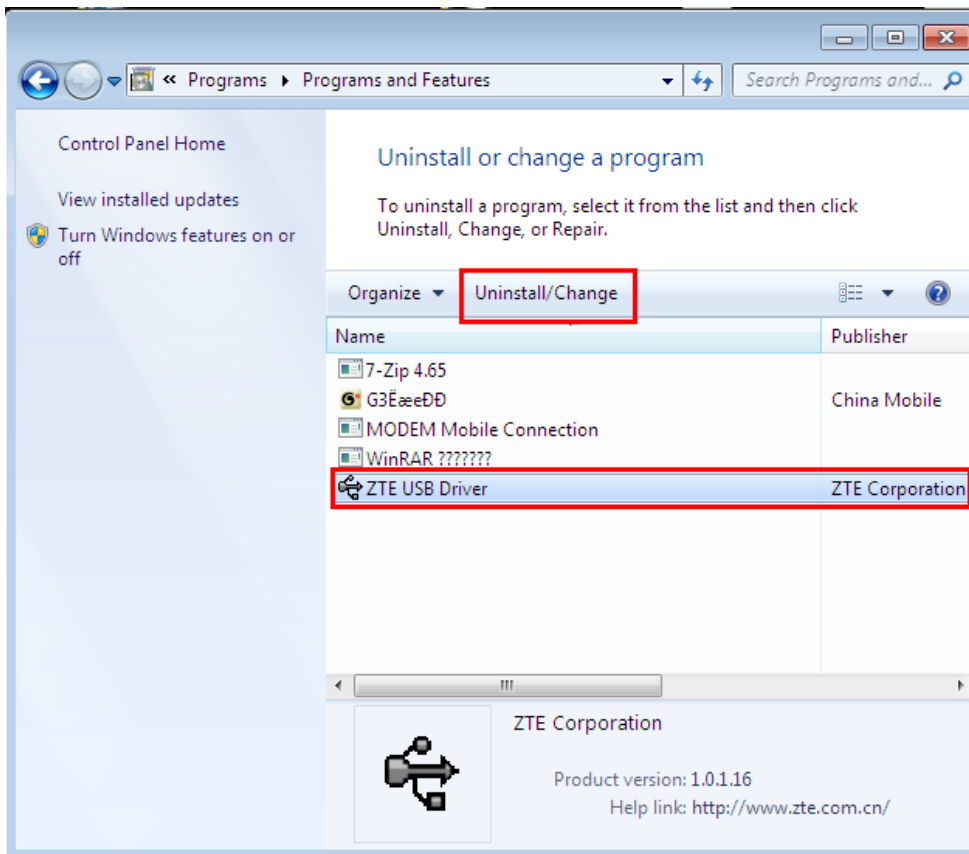


Fig 7

3.2 After UI program installed completed and plug out the Modem, does the Windows 7's driver package can be installed directly?

You can install Windows 7's driver directly, please refer to the "Windows 7 driver package installation steps 2.3" to see the specific installation methods.